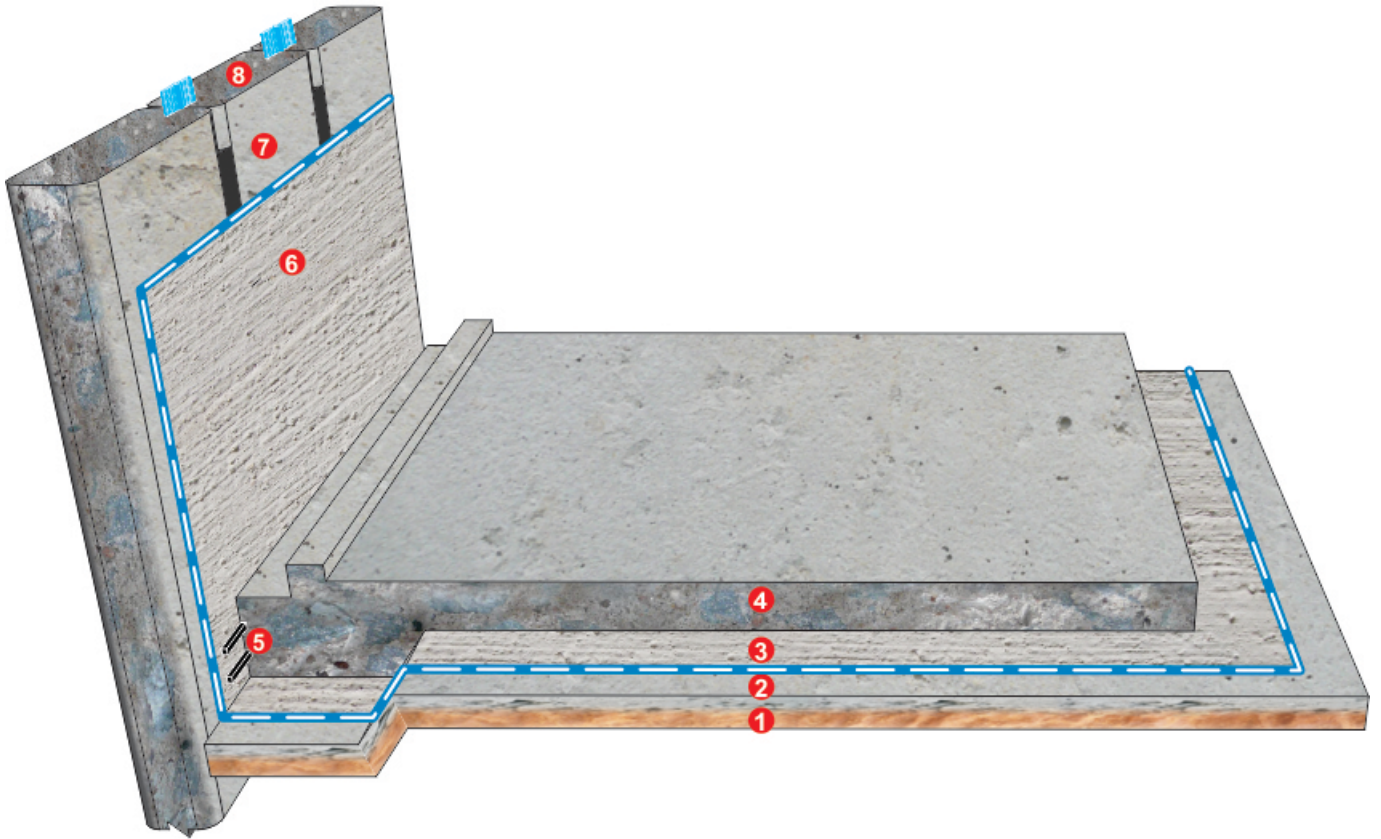




Product / sản phẩm:  
**MAXSEAL SUPER**





#### WATERPROOFING TO FLOOR & WALL

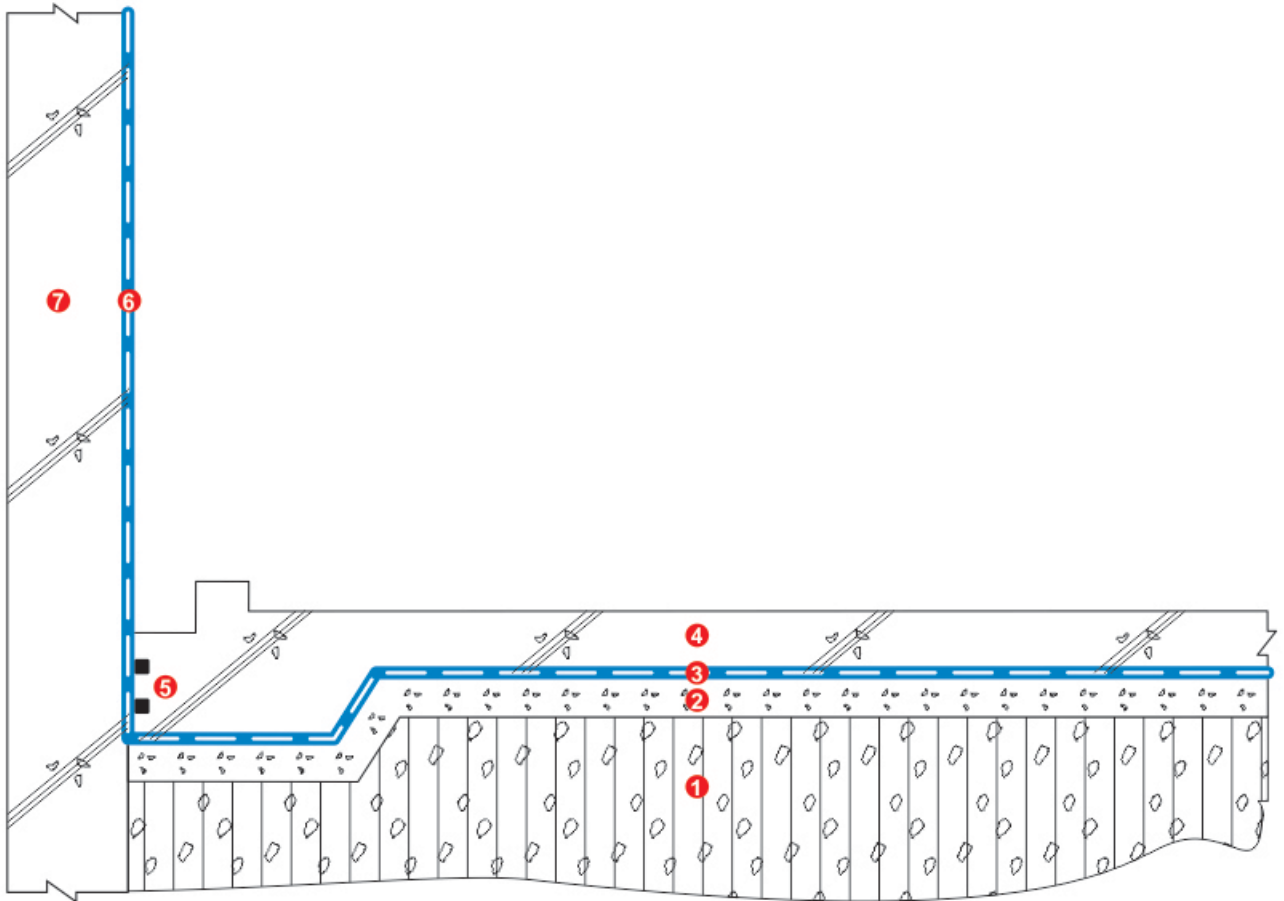
1. Compacted soil or sand or rock
2. 50 ~ 100 mm lean concrete
3. Waterproofing system: **MAXSEAL SUPER**
4. R.C. Floor slab.
5. **Bentonite Hyperstop**
6. Waterproofing system: **MAXSEAL SUPER**
7. Retaining wall
8. **PVC waterstop**

#### CHỐNG THẤM CHO SÀN & TƯỜNG

1. Lấp đất hoặc cát đầm chặt
2. Bê tông lót dày từ 50 ~ 100 mm
3. Hệ thống chống thấm: **MAXSEAL SUPER**
4. Sàn bê tông cốt thép
5. Băng cản nước **Bentonite Hyperstop**
6. Waterproofing system: **MAXSEAL SUPER**
7. Tường chắn đất tầng hầm
8. Băng cản nước **PVC waterstop**



## TYPICAL SPECIFICATION - QUY TRÌNH KỸ THUẬT



### WATERPROOFING FOR / CHỐNG THÂM CHO BASEMENT TẦNG HẦM

Project:

Shop Drwg

1.2



#### WATERPROOFING TO FLOOR

1. Compacted soil or sand or rock
2. 50 ~ 100 mm lean concrete
3. Waterproofing system:  
**MAXSEAL SUPER**
4. R.C. Floor slab.
5. **Bentonite Hyperstop**
6. Waterproofing system :  
**MAXSEAL SUPER**
7. Retaining wall

Manufacture & Supplier by:

Design & installation by:

