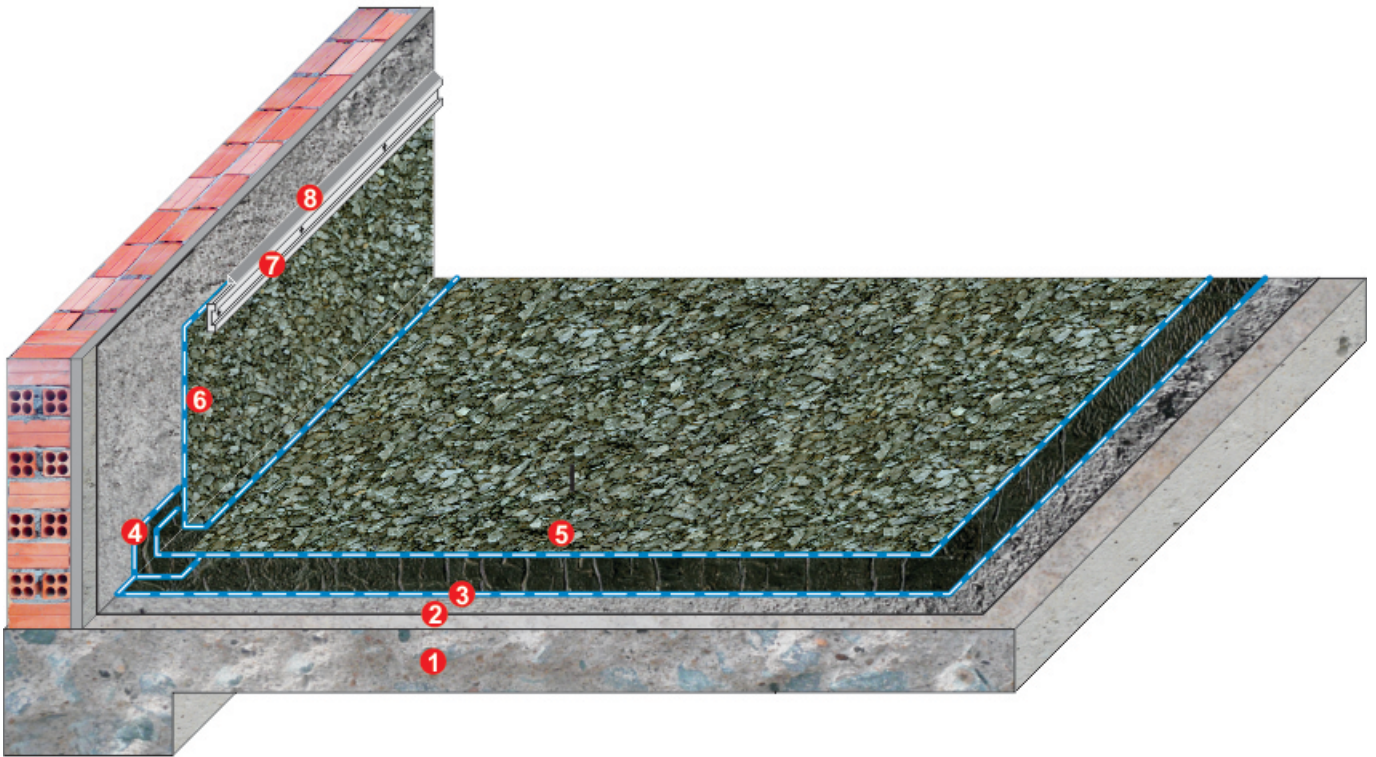




Product:
SOPRALENE FLAM 180 GR



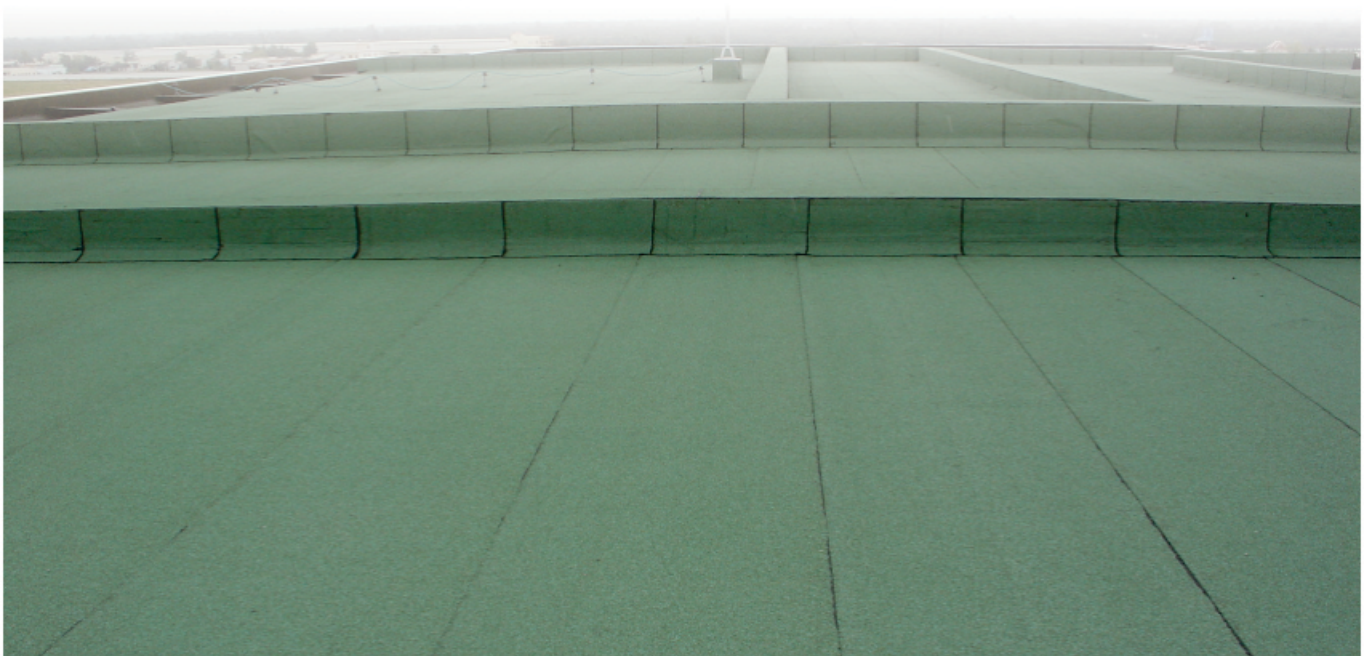


WATERPROOFING TO FLOOR & WALL

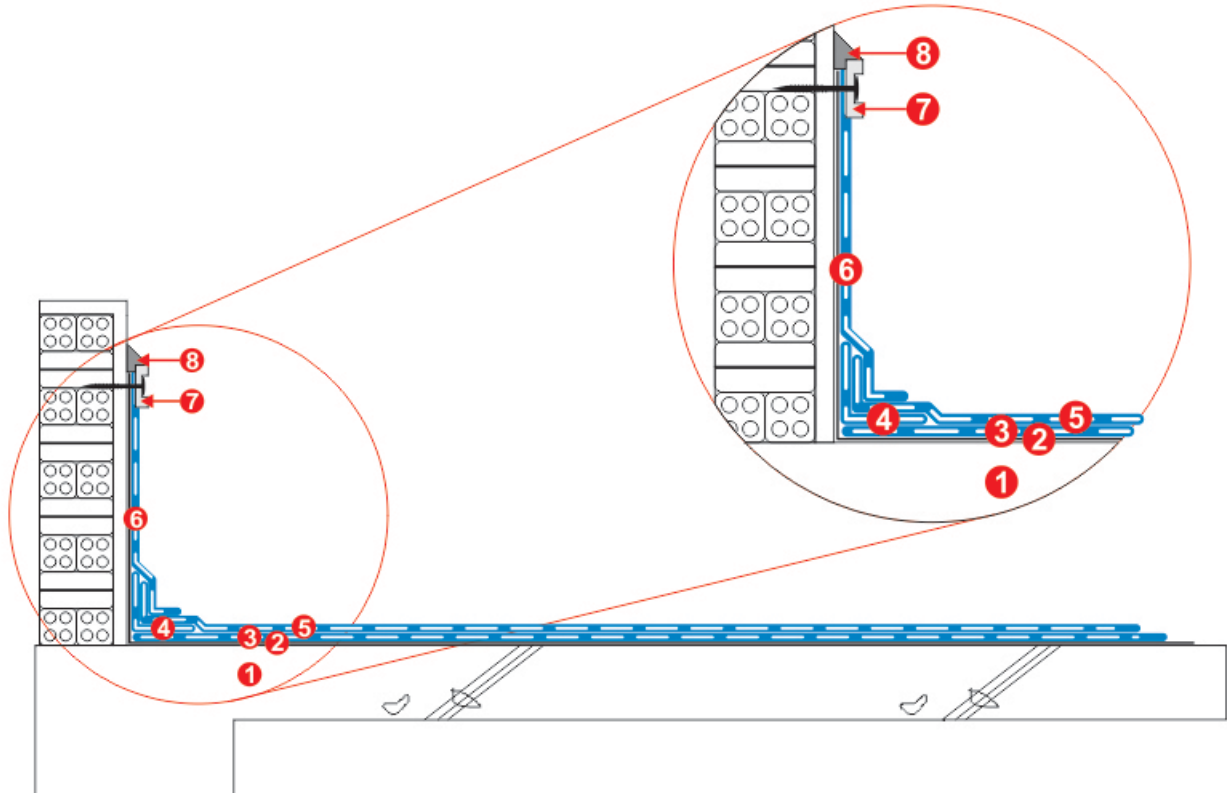
1. R.C. floor slab / screed slop 1.5 - 2.0%
2. Primer coat
3. Waterproofing system: **SOPRALENE FLAM 180**
4. **SOPRALENE FLAM 180** corner reinforcement
5. Waterproofing system: **SOPRALENE FLAM 180GR**
6. **SOPRALENE FLAM 180GR** to upturn
7. Aluminium Flashing
8. Sealant

CHỐNG THẤM CHO SÀN & TƯỜNG

1. Đáy B.T.C.T / Vữa tạo dốc 1.5 - 2.0%
2. Lớp Primer
3. Hệ thống chống thấm: **SOPRALENE FLAM 180**
4. Lớp gia cố góc: **SOPRALENE FLAM 180**
5. Hệ thống chống thấm: **SOPRALENE FLAM 180GR**
6. C.Thấm chân tường: **SOPRALENE FLAM 180GR**
7. Flashing nhôm
8. Sealant trám khe



TYPICAL SPECIFICATION - QUY TRÌNH KỸ THUẬT



WATERPROOFING FOR / CHỐNG THẤM CHO ROOF MÁI

Project:

Manufacture & Supplier by:



WATERPROOFING TO FLOOR & WALL

1. R.C. floor slab / screed slop 1.5 - 2.0%
2. Primer coat
3. Waterproofing system: **SOPRALENE FLAM 180**
4. **SOPRALENE FLAM 180** corner reinforcement
5. Waterproofing system: **SOPRALENE FLAM 180GR**
6. **SOPRALENE FLAM 180GR** to upturn
7. Aluminium Flashing
8. Sealant

Design & installation by:

 **MIWA**