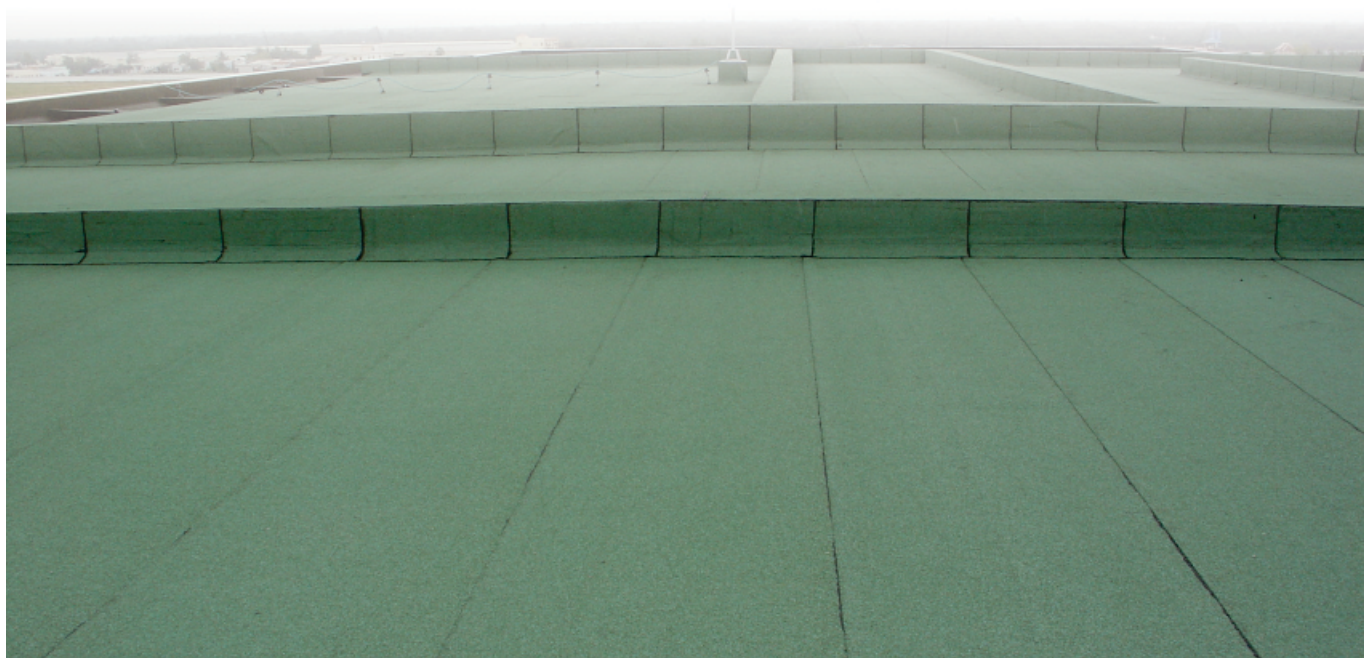
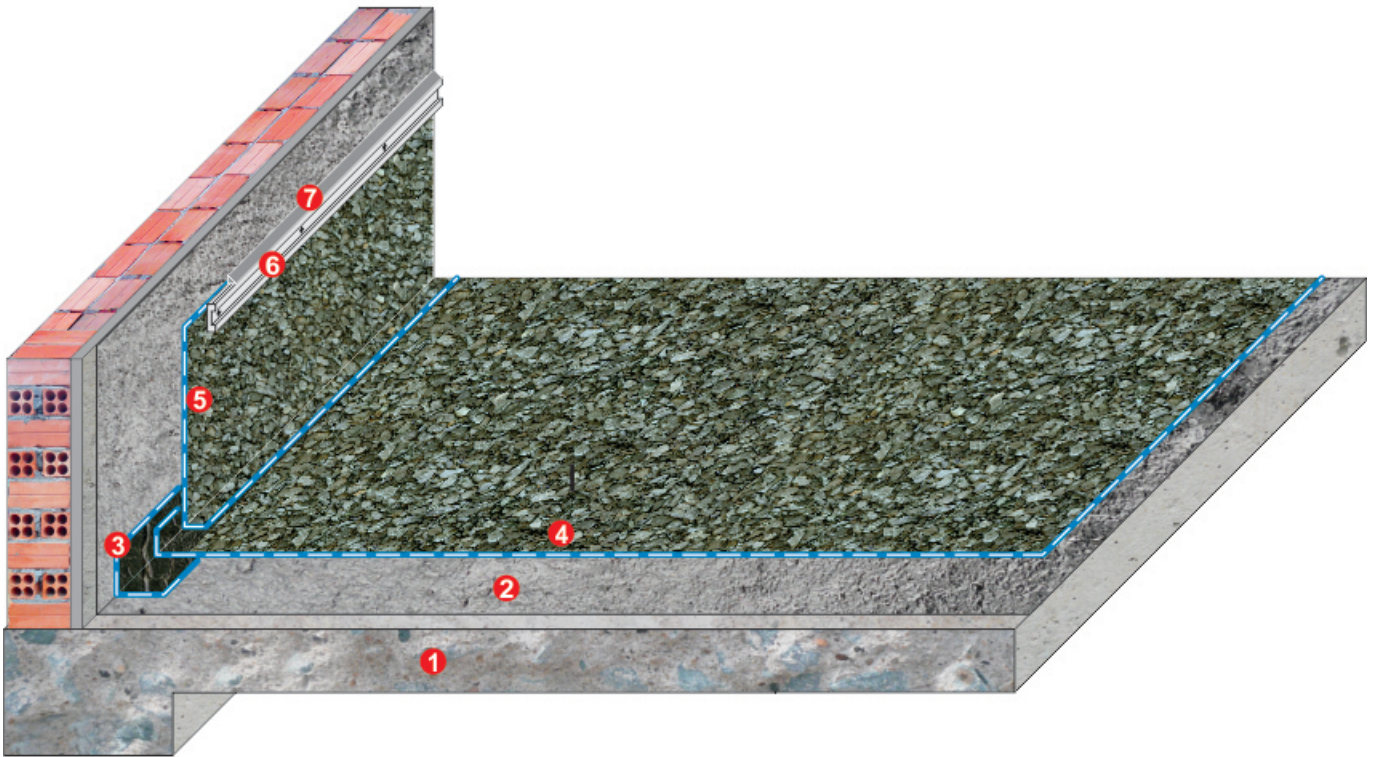




Product:
ELASTOPHENE FLAM GR





WATERPROOFING TO FLOOR & WALL

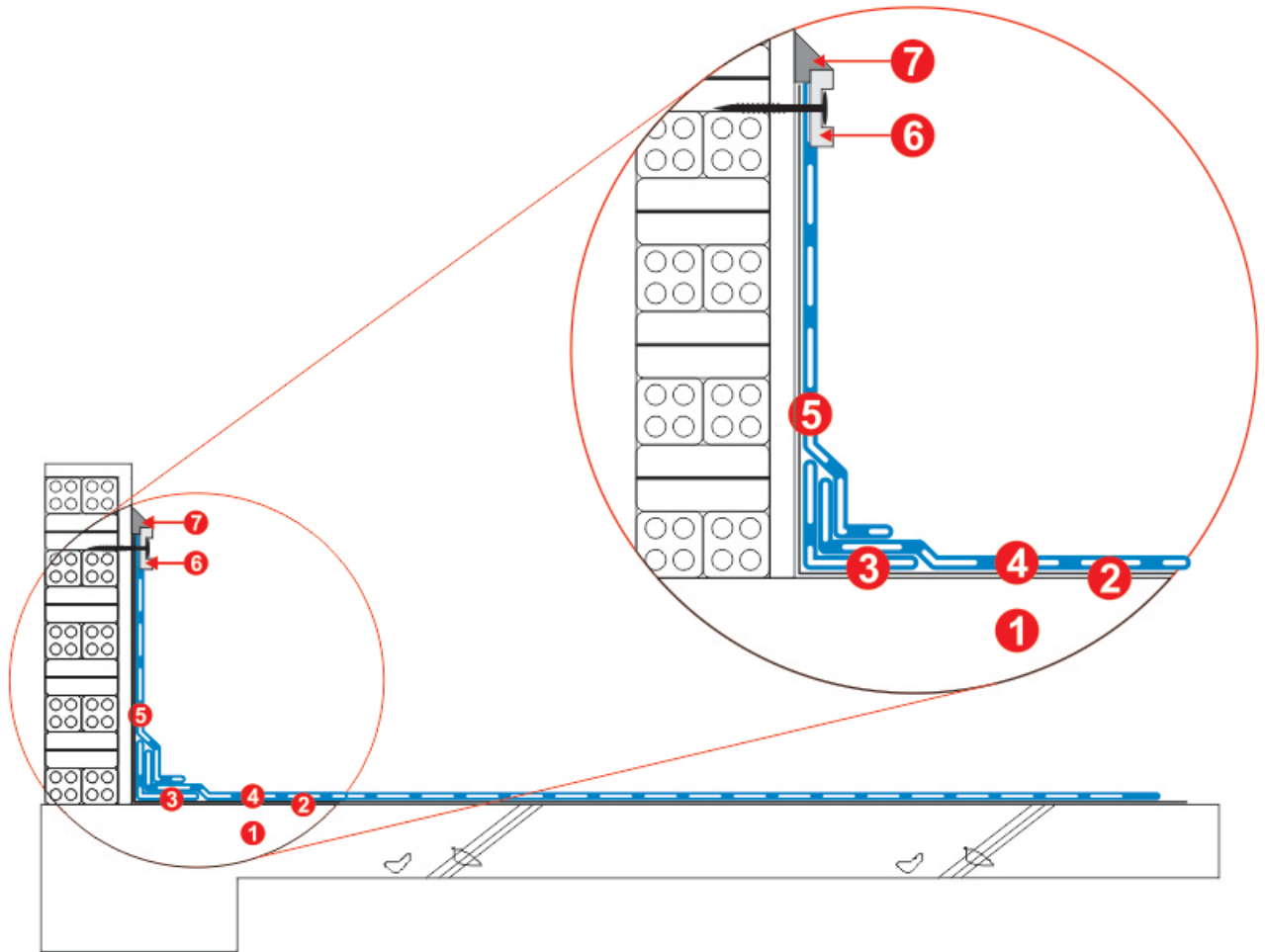
1. R.C. floor slab / screed slop 1.5 - 2.0%
2. Primer coat
3. **SOPRALENE FLAM 180** corner reinforcement
4. Waterproofing system: **SOPRALENE FLAM 180GR**
5. **SOPRALENE FLAM 180GR** to upturn
6. Aluminium Flashing
7. Sealant

CHỐNG THẤM CHO SÀN & TƯỜNG

1. Đáy B.T.C.T / Vữa tạo dốc 1.5 - 2.0%
2. Lớp Primer
3. Lớp gia cố góc: **SOPRALENE FLAM 180**
4. Hệ thống chống thấm: **SOPRALENE FLAM 180GR**
5. C.Thấm chân tường: **SOPRALENE FLAM 180GR**
6. Flashing nhôm
7. Sealant trám khe



TYPICAL SPECIFICATION - QUY TRÌNH KỸ THUẬT



WATERPROOFING FOR / CHỐNG THẤM CHO
ROOF
MÁI

Project:

Manufacture & Supplier by:

Design & installation by:



WATERPROOFING TO FLOOR & WALL

1. R.C. floor slab / screed slop 1.5 - 2.0%
2. Primer coat
3. **SOPRALENE FLAM 180** corner reinforcement
4. Waterproofing system: **SOPRALENE FLAM 180GR**
5. **SOPRALENE FLAM 180GR** to upturn
6. Aluminium Flashing
7. Sealant

