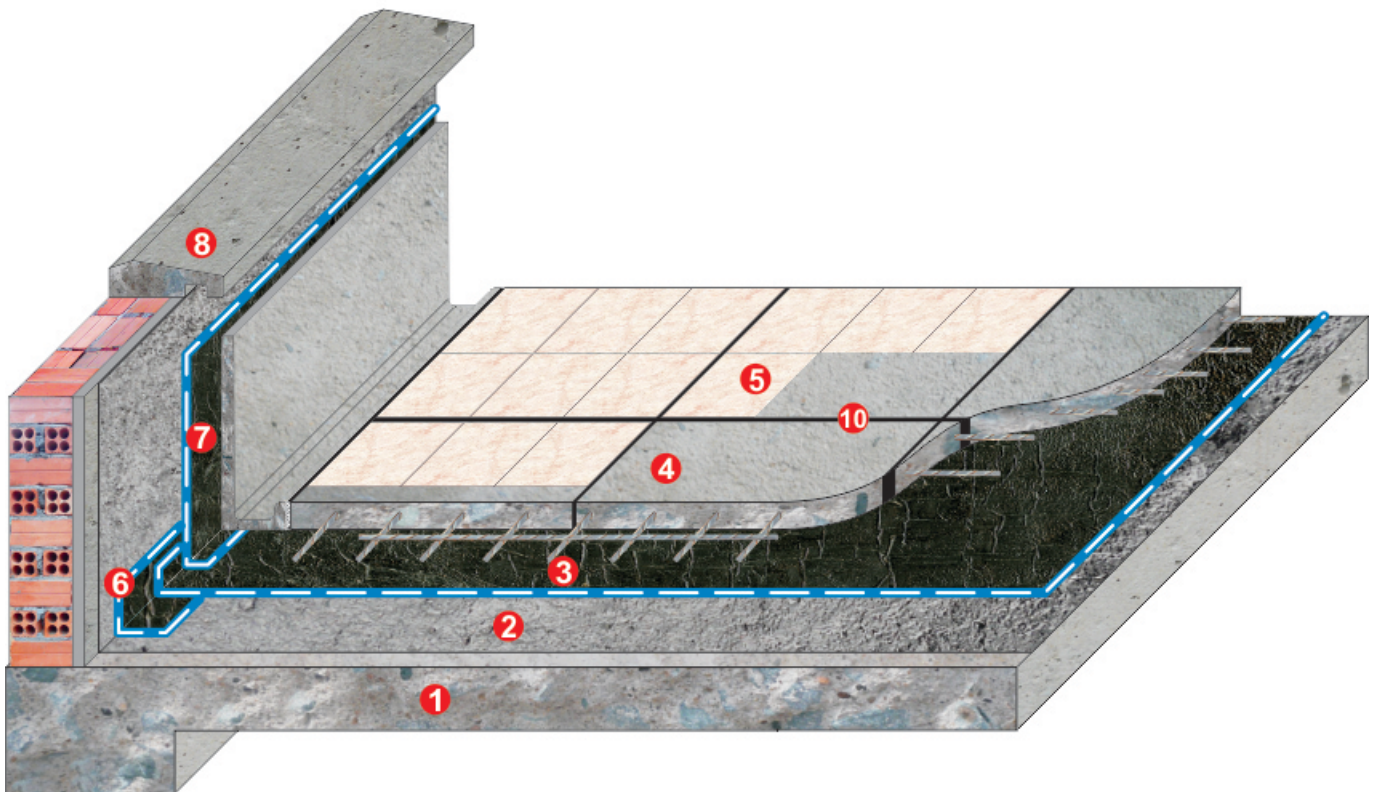




Product:
SOPRALENE FLAM 180





WATERPROOFING TO FLOOR & WALL

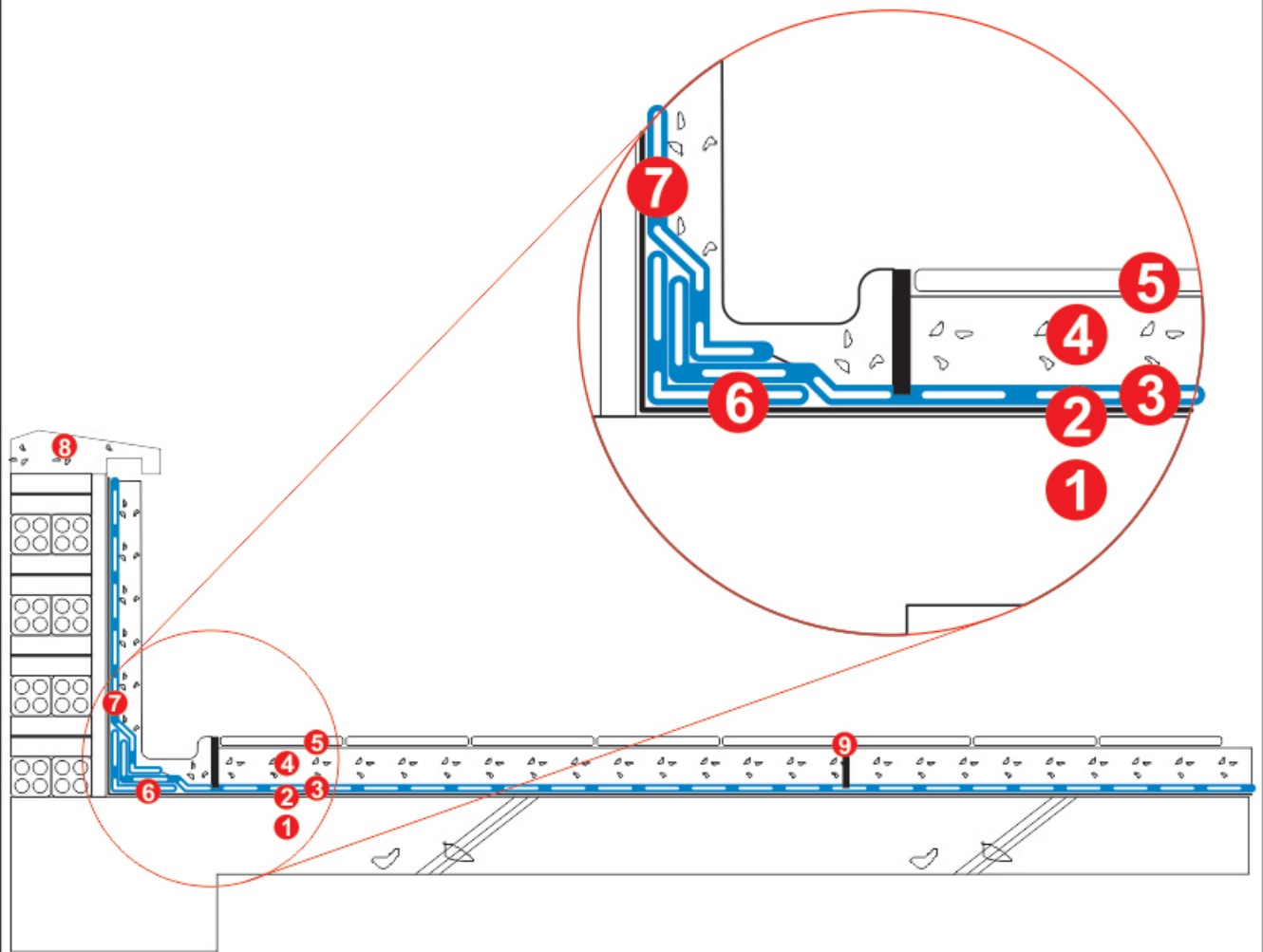
1. R.C. floor slab.
2. Primer coat
3. Waterproofing system: **SOPRALENE FLAM 180**
4. Protection screed with wire mesh, 50 mm thickness
5. Optional tile finish
6. **SOPRALENE FLAM 180** corner reinforcement
7. **SOPRALENE FLAM 180** to upturn
8. Waterdrop Prevention
9. Expansion joint 2m x 2m

CHỐNG THẤM CHO SÀN & TƯỜNG

1. Đáy B.T.C.T.
2. Lớp Primer
3. Hệ thống chống thấm: **SOPRALENE FLAM 180**
4. Bê tông đá mi có lưới thép, dày 50mm
5. Gạch hoàn thiện (Tùy chọn)
6. Lớp gia cố góc: **SOPRALENE FLAM 180**
7. C.Thấm chân tường: **SOPRALENE FLAM 180**
8. Gờ chắn nước mưa
9. Khe nhiệt 2m x 2m



TYPICAL SPECIFICATION - QUY TRÌNH KỸ THUẬT



WATERPROOFING FOR / CHỐNG THẤM CHO ROOF & GROUND FLOOR MÁI & SÀN TẦNG TRỆT

Project:

Manufacture & Supplier by:



WATERPROOFING TO FLOOR & WALL

1. R.C. floor slab / screed slop 1.5 - 2.0%
2. Primer coat
3. Waterproofing system:
SOPRALENE FLAM 180
4. Protection screed with wire mesh,
50 mm thickness
5. Optional tile finish
6. **SOPRALENE FLAM 180**
corner reinforcement
7. **SOPRALENE FLAM 180** to upturn
8. Waterdrop Prevention
9. Expansion joint 2m x 2m



Design & installation by:

